

INTRODUCTION TO THE U.S. ARMY



Association of the United States Army

OVERVIEW



YOUR UNITED STATES ARMY

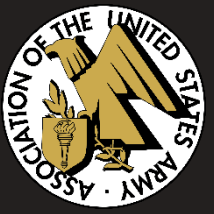
The Army is older than the country it serves. Authorized by the Second Continental Congress, the Continental Army was established on 14 June 1775.

THE ARMY:

- is the oldest and largest of the military departments;
- has Soldiers in every state and U.S. territory (Total Army);
- is the second largest U.S. employer (Wal-Mart is the largest);
- has over 250 Military Occupational Specialties and Officer specialties; and
- is the foundation of the Joint Force.

Fewer than 1% of Americans currently serve in the military; 79% of Soldiers come from families that have served in the military.

PEOPLE ARE OUR ARMY



Soldiers serve and live by a set of seven common values:

LOYALTY

DUTY

RESPECT

SELFLESS SERVICE

HONOR

INTEGRITY

PERSONAL COURAGE



**EVERY SOLDIER
IS A VOLUNTEER**

**Soldiers are not *in* the Army—
Soldiers *are* the army.**

Gen. Creighton Abrams,
26th Chief of Staff of the Army

AMERICA'S ARMY



1.012 MILLION*
SOLDIERS

~187,000
WORLDWIDE DEPLOYED



82%
MALE



18%
FEMALE

- 55% Caucasian
- 21% African American
- 16% Hispanic
- 5% Asian/Pacific Islander
- 3% Other/Unknown



340,216
PIECES OF EQUIPMENT



284,344
WHEELED
VEHICLES



26,232
COMBAT
VEHICLES



20,742
MRAP
VEHICLES



4,300
AIRCRAFT

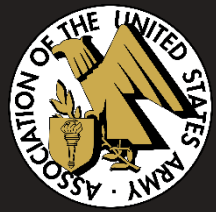


4,466
STRYKER
VEHICLES



132
WATERCRAFT

THE AMERICAN SOLDIER: THEN & NOW



1968 (ENLISTED)

- 22 years old
- 79% high school graduates
- < 1% female
- 21% minority
- 60% draftees
- 36% married
- SGT base pay = \$279/mo*
- SGLI coverage = \$10,000*
- 35 lbs of equipment (\$1,856)*
- Individual replacements
- 62% survival rate if wounded

2020 (ENLISTED)

- 28 years old
- 96% high school graduates
- 18% female
- 42% minority
- 100% volunteers
- 52% married
- SGT base pay = \$3,001/mo
- SGLI coverage = \$400,000
- 75+ lbs of equipment (\$19,454)
- Unit rotations
- 88% survival rate if wounded



WHAT YOUR ARMY DOES



The U.S. Army is globally engaged with approximately **187,000 Soldiers** supporting Combatant Commanders in **140 countries**. These Soldiers conduct combat operations, deter aggression and assure our allies and partners.

CRITICAL ENABLING CAPABILITIES

- Joint and Theater logistics, including support to allies
- Military training and education centers
- Military healthcare – Operating the majority of military hospitals
- Civil Engineering (Army Corps of Engineers)
- Domestic natural disaster response
- Administering Arlington National Cemetery
- Infectious disease research
- State Partnership Program (ARNG: 79 International Partnerships)

THE UNITED STATES ARMY



The U.S. Army is a total army—one Army—comprised of three components: Regular Army, Army National Guard and Army Reserve.

	2020 ENDSTRENGTH <small>(AS OF SEP 20)</small>	2021 NDAA ENDSTRENGTH <small>(ENACTED)</small>	2022 NDAA ENDSTRENGTH* <small>(REQUEST)</small>
REGULAR ARMY:	485,383	485,900	485,000
ARMY NATIONAL GUARD:	336,131	336,500	336,000
ARMY RESERVE:	188,703	189,800	189,500
TOTAL ARMY:	1,010,217	1,012,200	1,010,500

**The Army depends on the support of 196,710
Department of the Army civilian employees.**

CONSTITUTIONALLY AUTHORIZED



The Congress shall have the power: “To provide for the common defense...To raise and support Armies... To provide and maintain a Navy...To make rules for the Government and Regulation of the land and naval forces...To declare war...And to make laws which shall be necessary and proper for carrying out the foregoing powers.”

—Article I, Section 8,
The Constitution of the United States

ROLE OF THE ARMY



Federal law, under Title 10 of the United States Code, states that the Army “shall be organized, trained and equipped primarily for prompt and sustained combat incident to operations on land.”

The purpose of the U.S. Army is to deploy, fight and win our nation’s wars by providing ready, prompt and sustained land dominance by Army forces across the full spectrum of conflict as part of the joint force.



PREVENT: The Army deters conflict by maintaining credibility based on capacity, readiness and modernization.

SHAPE: The Army shapes the environment by sustaining strong relationships with other armies, building their capacity and facilitating strategic success.

WIN: If prevention fails, the Army rapidly applies its combined arms capabilities to dominate the environment and win decisively.

ARMY LEADERSHIP



Secretary of the Army
Christine Wormuth

- Exercises civilian control of the Army
- Formulates and implements policy guidance for the Army
- Resources the Army



40th Chief of Staff of the Army
General James C. McConville

- Senior officer of the Army, primary advisor to the Secretary of the Army
- Readiness of the force
- Shaping the Future Army



16th Sergeant Major of the Army
SMA Michael Grinston

- Senior enlisted advisor to the Chief of Staff
- Advocates for Soldiers

ARMY PRIORITIES



PEOPLE

Support Our People - Soldiers, Civilians, and their Families

READINESS

Maintain Tactical and Build Strategic Readiness

MODERNIZATION

Modernize the Force; Deliver Concepts and Capabilities,
and support Joint All Domain Operations

THE SOLDIER PROFESSION: ENLISTED



BASIC COMBAT TRAINING

10-week training course that transforms Civilians into Soldiers.

ADVANCED INDIVIDUAL TRAINING

4 to 56 weeks of hands-on training and field instruction to develop proficiency in specific career fields.

PRIVATE – SPECIALIST

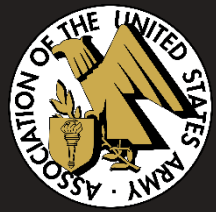
- Warrior and a member of a team
- Disciplined, physically and mentally tough, trained and proficient in warrior tasks and drills

NON-COMMISSIONED OFFICER: CORPORAL – SERGEANT MAJOR

- Leaders are responsible for the preparation and accomplishment of the mission and welfare and training of Soldiers
- Backbone of the Army
- Continually advance in expert knowledge and skills throughout their careers



THE SOLDIER PROFESSION: OFFICER



BASIC OFFICER LEADER COURSE (Pre-Commissioning Training)



West Point



Reserve Officer Training Corps



Officer Candidate School

BASIC OFFICER LEADER COURSE

Provides newly commissioned Army officers with progressive and sequential training at branch schools, in order to produce adaptive officers, who are technically and tactically competent, confident and capable of leading in unified land operations.

CAREER PROGRESSION

- Officers attend additional professional schools as they progress in their career.
- Options are available to obtain advanced civilian degrees, train with foreign militaries and work with industry.



ARMY RANK INSIGNIA



OFFICERS*

<p>O-1</p> <p>Second Lieutenant (2LT)</p>	<p>O-2</p> <p>First Lieutenant (1LT) 18 Months</p>	<p>O-3</p> <p>Captain (CPT) 4 Years</p>	<p>O-4</p> <p>Major (MAJ) 10-11 Years</p>
<p>O-5</p> <p>Lieutenant Colonel (LTC) 16.5 Years</p>	<p>O-6</p> <p>Colonel (COL) 22 Years</p>	<p>O-7</p> <p>Brigadier General (BG)</p>	<p>O-8</p> <p>Major General (MG)</p>
<p>O-9</p> <p>Lieutenant General (LTG)</p>	<p>O-10</p> <p>General (GEN)</p>	<p>SPECIAL</p> <p>General of the Army (GA)</p>	

WARRANT OFFICERS*

<p>W-1</p> <p>Warrant Officer (W01)</p>	<p>W-2</p> <p>Chief Warrant Officer (CW2) 2 Yrs + WOBC</p>
<p>W-3</p> <p>Chief Warrant Officer (CW3) 7-8 Years + WOAC</p>	<p>W-4</p> <p>Chief Warrant Officer (CW4) 12-14 Years + WOILE</p>
<p>W-5</p> <p>Chief Warrant Officer (CW5) 17-20 Years + WOSSE</p>	

ENLISTED

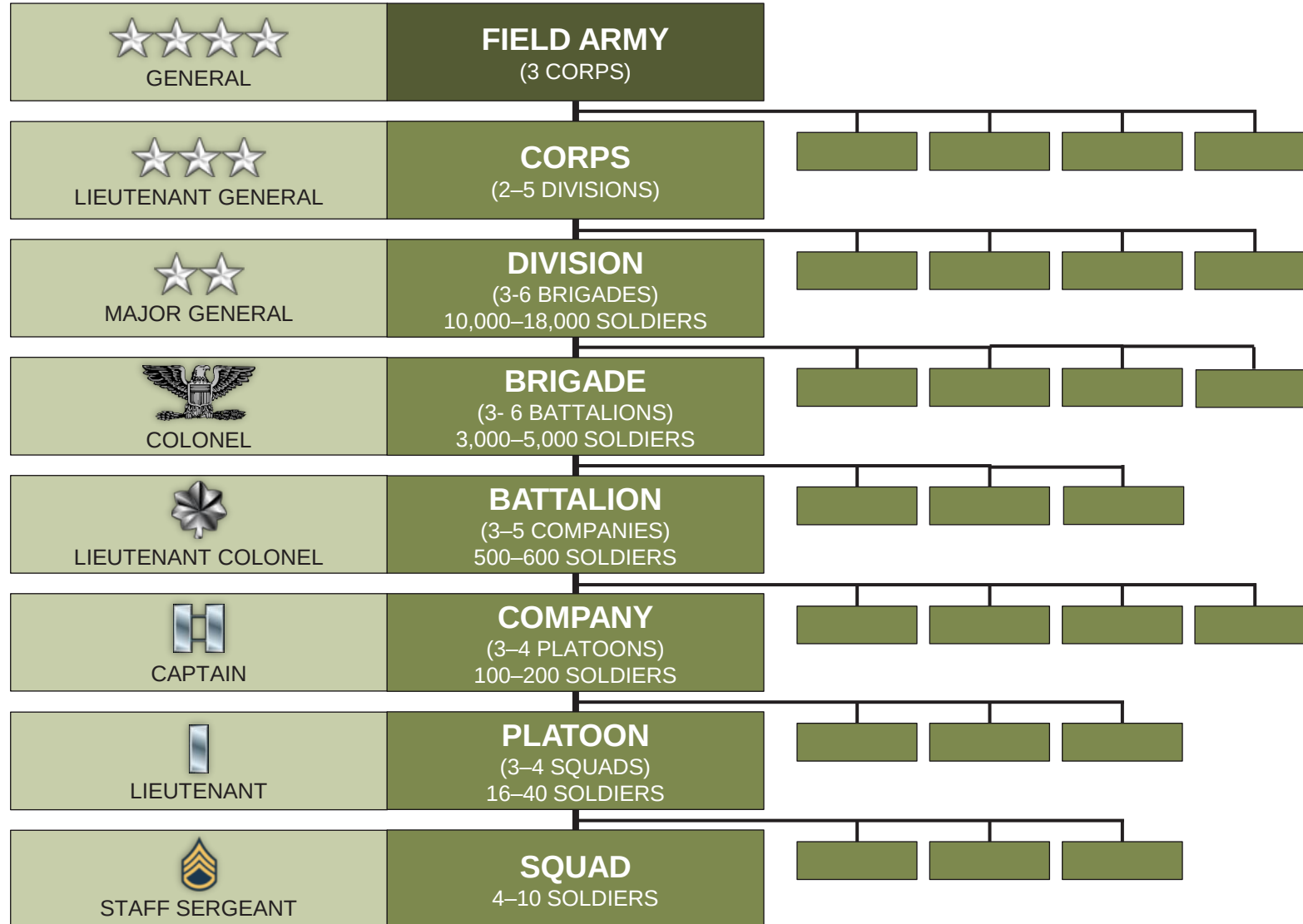
<p>E-1</p> <p>No Insignia</p> <p>Private E-1 (PV1)</p>	<p>E-2</p> <p>Private E-2 (PV2) 6 Months</p>	<p>E-3</p> <p>Private First Class (PFC) 16 Months</p>	<p>E-4</p> <p>Specialist (SPC) Corporal (CPL) 30 Months</p>
<p>E-5</p> <p>Sergeant (SGT) 4.5 Years</p>	<p>E-6</p> <p>Staff Sergeant (SSG) 8 Years</p>	<p>E-7</p> <p>Sergeant First Class (SFC) 12.5-14 Years</p>	<p>E-8</p> <p>Master Sergeant (MSG) First Sergeant (1SG) 17.7-20 Years</p>
<p>E-9</p> <p>Sergeant Major (SGM) Command Sergeant Major (CSM) 22.6-24 Years</p>		<p>SENIOR ENLISTED ADVISOR</p> <p>Sergeant Major of the Army (SMA)</p>	

* Only counts commissioned time.

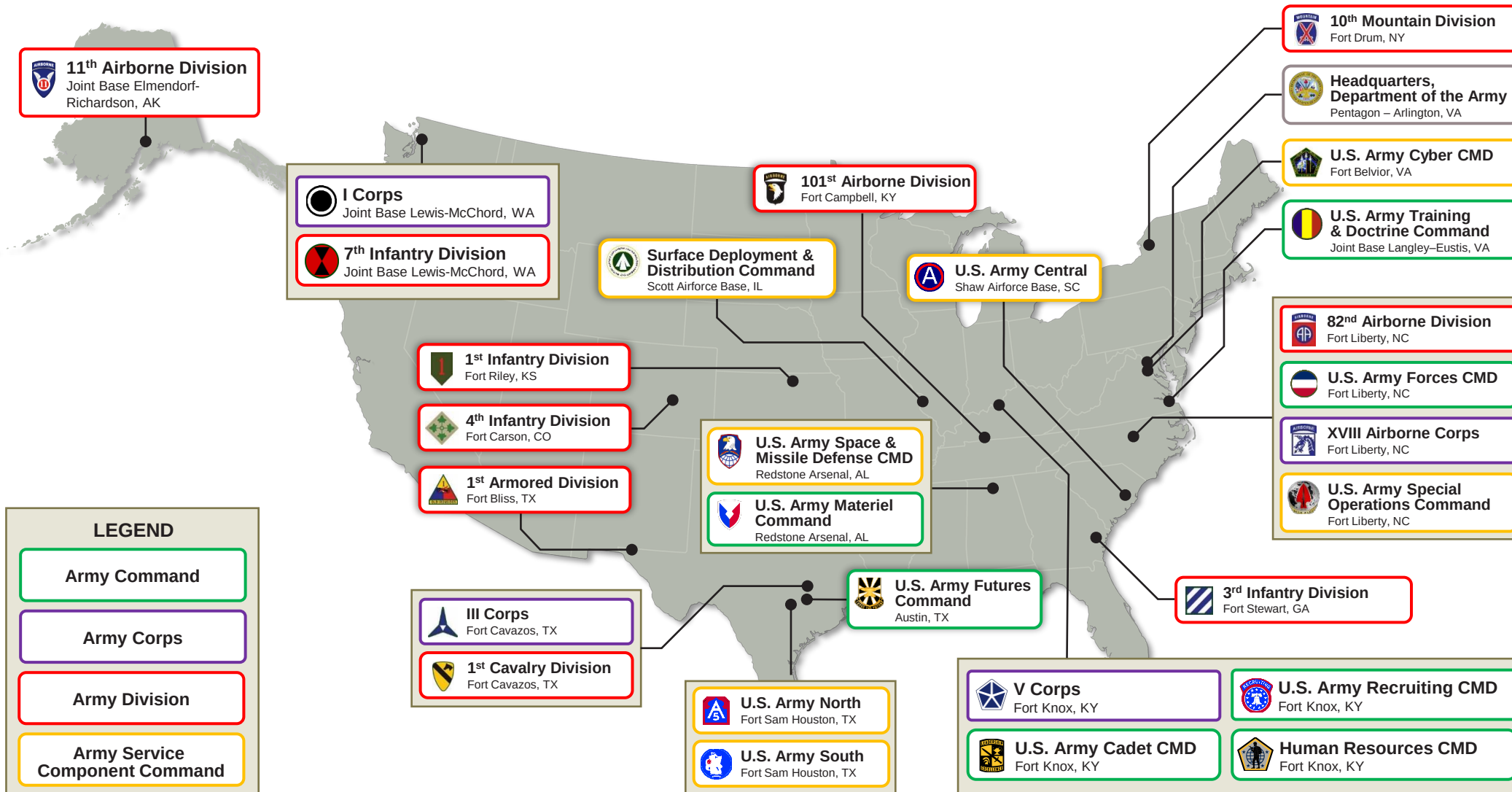
WOBC – Warrant Officer Basic Course
WOAC – Warrant Officer Advanced Course

WOILE – Warrant Officer Intermediate Level Education
WOSSE – Warrant Officer Senior Service Education

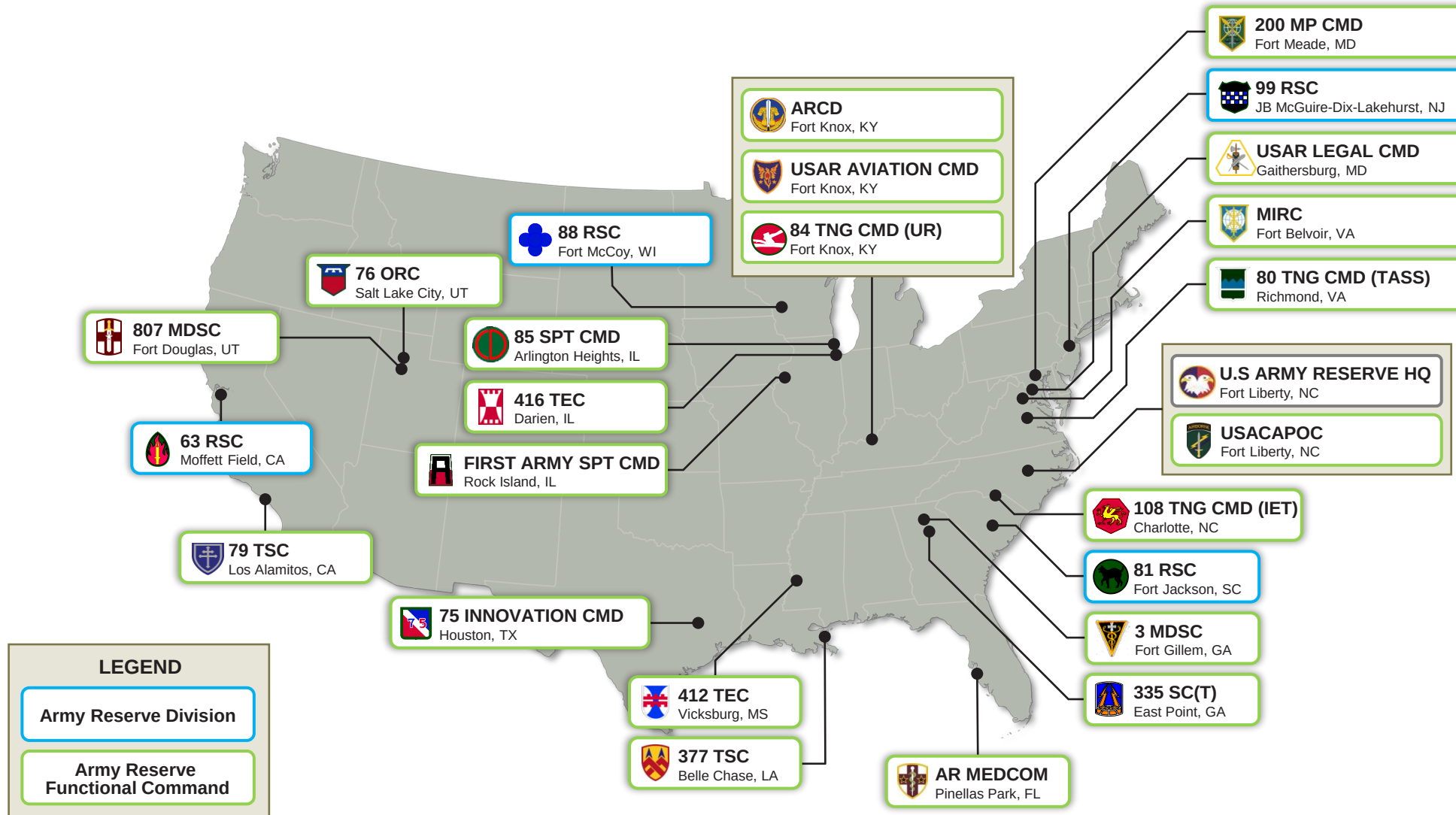
COMBAT FORCE STRUCTURE



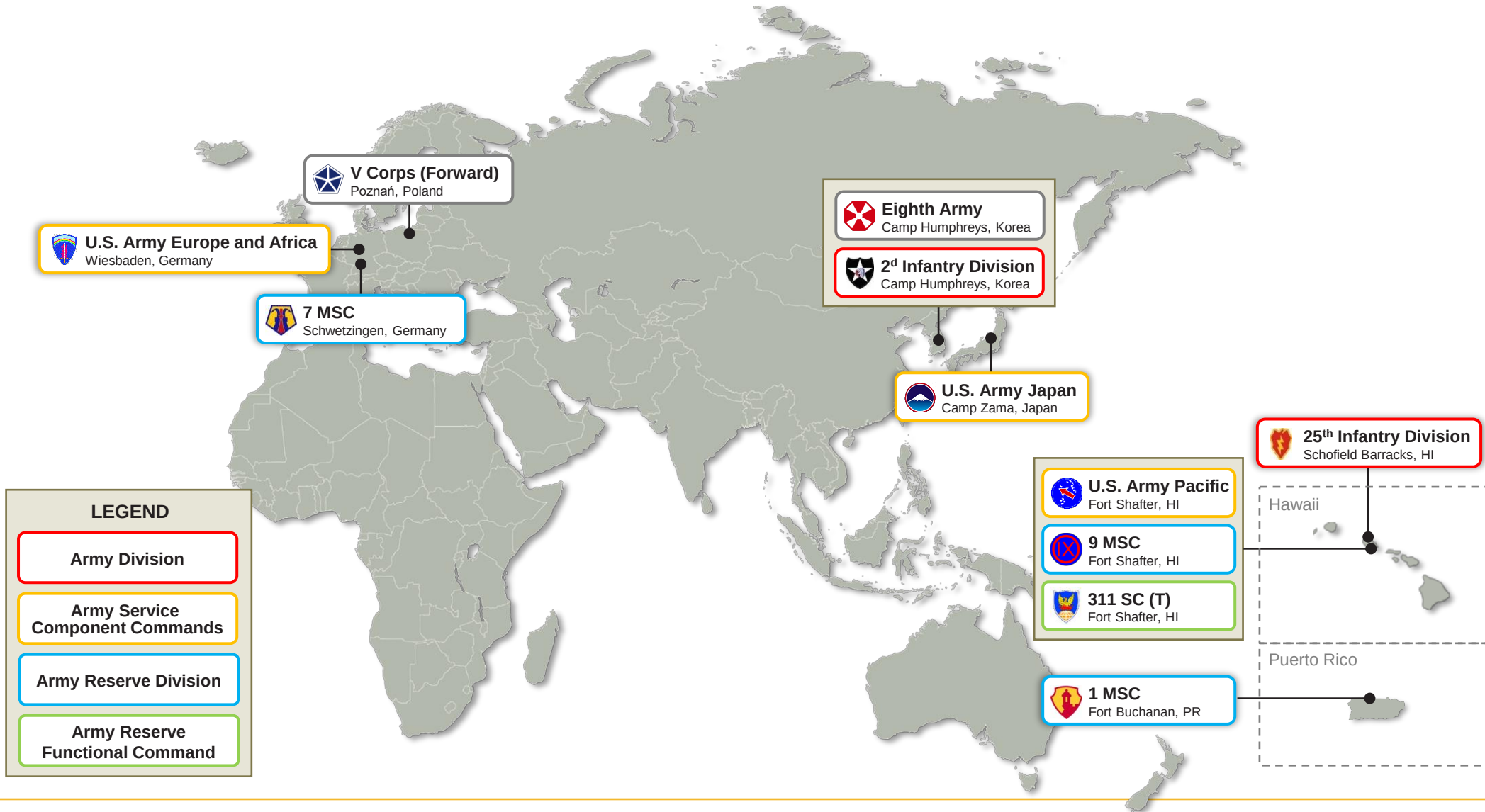
REGULAR ARMY: CONUS-BASED UNITS



ARMY RESERVE: DIVISIONS & FUNCTIONAL COMMANDS



REGULAR & RESERVE ARMY: OCONUS-BASED UNITS



ARMY NATIONAL GUARD: DIVISIONS & BRIGADE COMBAT TEAMS



28th Infantry Division
Pennsylvania



29th Infantry Division
Virginia & Maryland



34th Infantry Division
Minnesota



35th Infantry Division
Kansas & Missouri



36th Infantry Division
Texas



38th Infantry Division
Indiana



40th Infantry Division
California



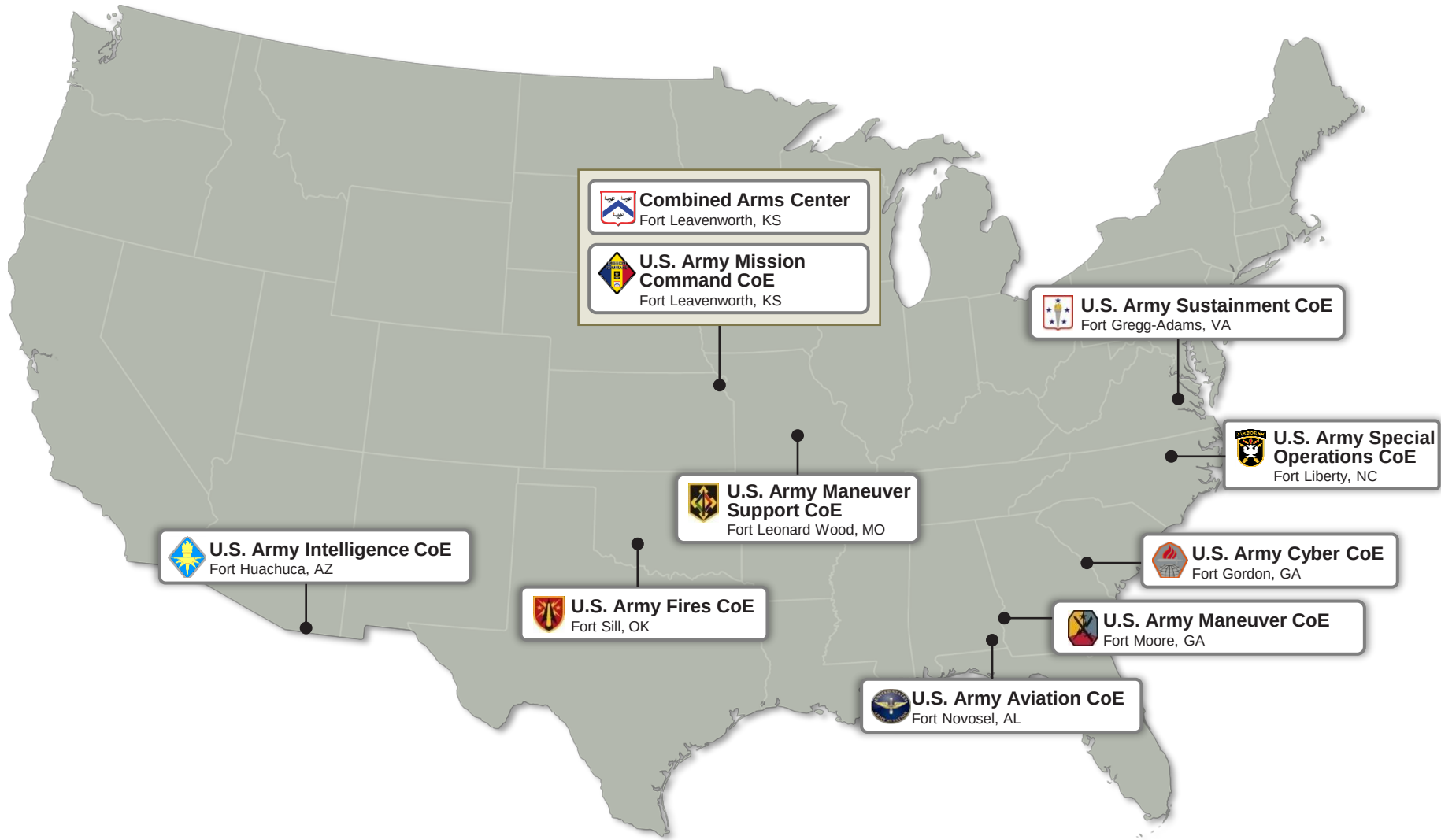
42^d Infantry Division
New York



Puerto Rico



REGULAR ARMY: CENTERS OF EXCELLENCE





FY24 ARMY BUDGET REQUEST: PRESIDENT'S BUDGET PROPOSAL

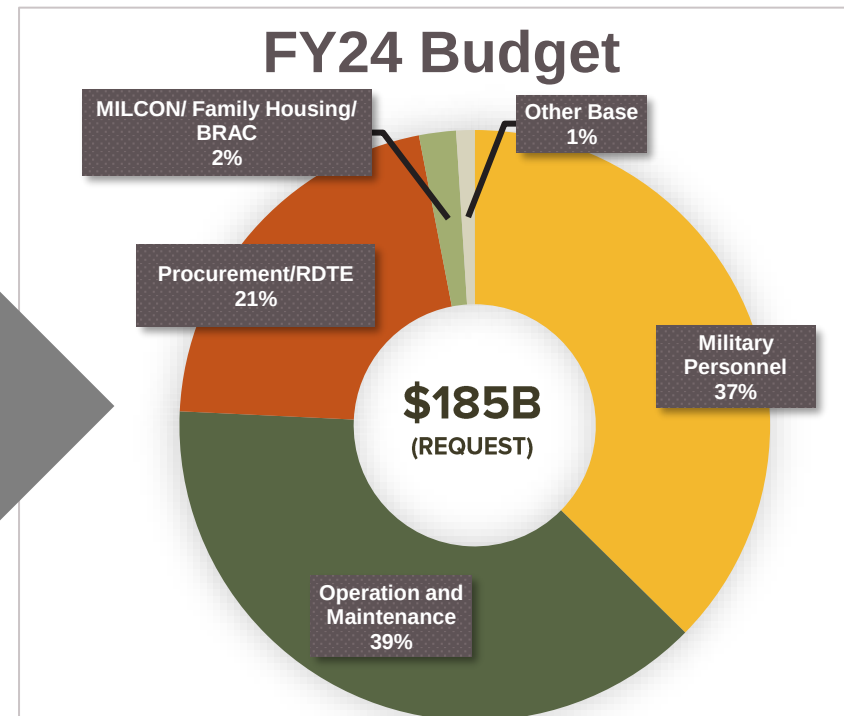
BASE FUNDING PROGRAM

REQUEST (\$B)	FY22 Actuals	FY23 Enacted	FY24* (requested)
MILITARY PERSONNEL¹	66.5	68.0	69.8
OPERATION AND MAINTENANCE²	66.3	70.6	72.1
PROCUREMENT/RDTE	37.5	40.8	39.2
MILCON/FAMILY HOUSING/BRAC	3.2	3.9	2.8
OTHER BASE³	2.0	1.8	1.7
TOTALS	175.5	185.2	185.5

¹ Includes Medicare Eligible Retirement Healthcare Fund

² Includes Environmental Restoration Account (ERA) Funding

³ Other Base: Chemical Agent and Munitions Destruction; Army Working Capital Fund; Arlington National Cemetery; Counter-Islamic State of Iraq/ Syria Train and Equip Fund; Afghanistan Security Forces Fund (FY22 Only)



- FY 2024 Army budget is committed to People First, sustaining readiness gains and continuing modernization within its topline.
- Army's budget request is a real growth rate of -2.4% with best estimate of inflation
- Stable funding is necessary to:
 - Support Our People - Soldiers, Civilians, and their Families
 - Modernize the Force; Deliver Concepts and Capabilities
 - Maintain Tactical Readiness and Build Strategic Readiness



ASSOCIATION OF THE UNITED STATES ARMY

